


LOUISIANA
WATERSHED
INITIATIVE

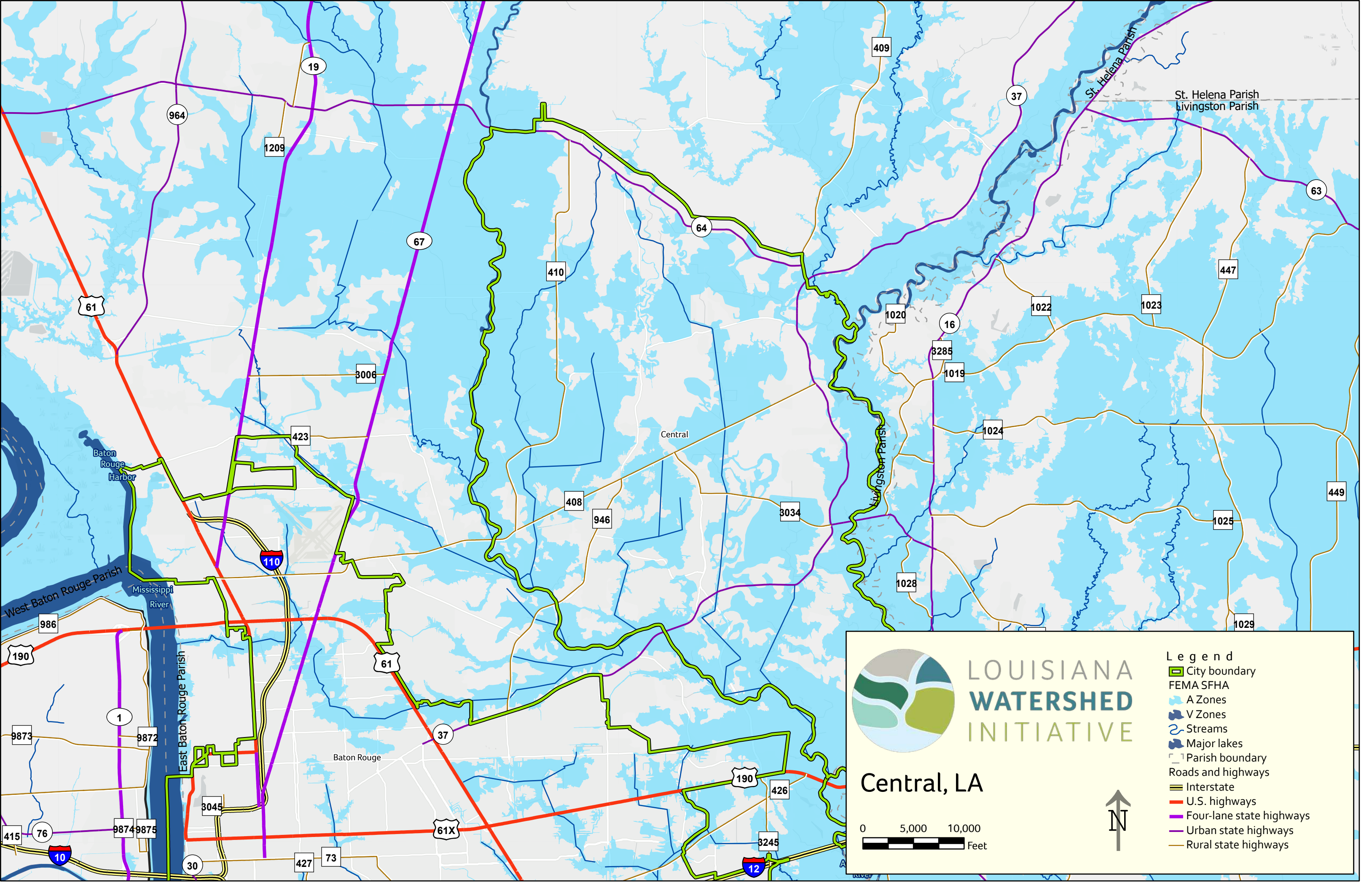
Baton Rouge, LA


0 10,000 20,000 Feet



Legend

- City boundary
- FEMA SFHA
 - A Zones
 - V Zones
- Streams
- Major lakes
- Parish boundary
- Roads and highways
 - Interstate
 - U.S. highways
 - Four-lane state highways
 - Urban state highways
 - Rural state highways






LOUISIANA
WATERSHED
INITIATIVE

Central, LA

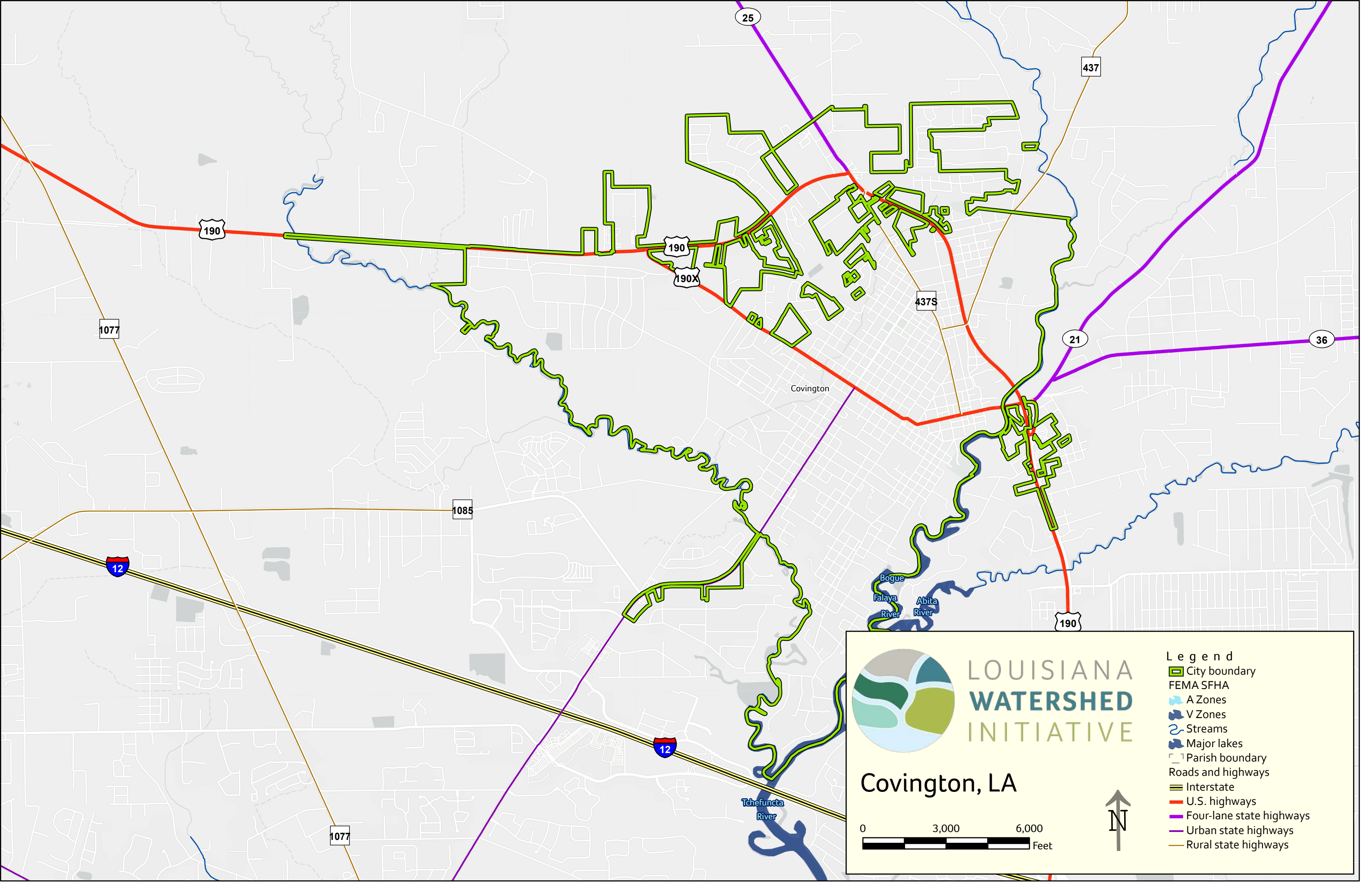
05,00010,000

Feet



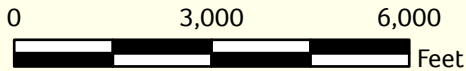
Legend

- City boundary
- FEMA SFHA
- A Zones
- V Zones
- Streams
- Major lakes
- Parish boundary
- Roads and highways
 - Interstate
 - U.S. highways
 - Four-lane state highways
 - Urban state highways
 - Rural state highways



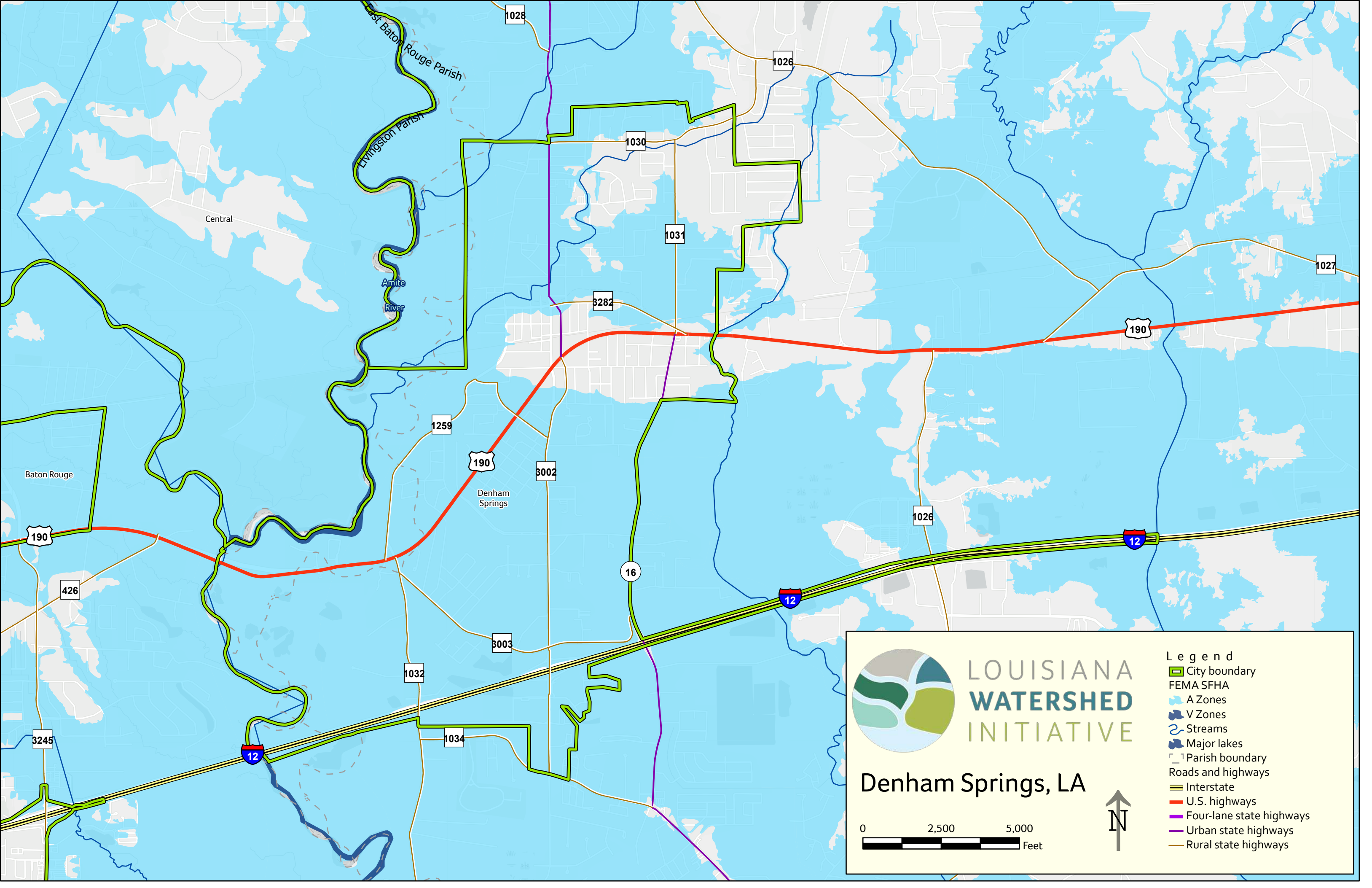
LOUISIANA
WATERSHED
INITIATIVE


Covington, LA



Legend

- City boundary
- FEMA SFHA
- A Zones
- V Zones
- Streams
- Major lakes
- Parish boundary
- Roads and highways
- Interstate
- U.S. highways
- Four-lane state highways
- Urban state highways
- Rural state highways





LOUISIANA
WATERSHED
INITIATIVE

Denham Springs, LA

0

2,500

5,000

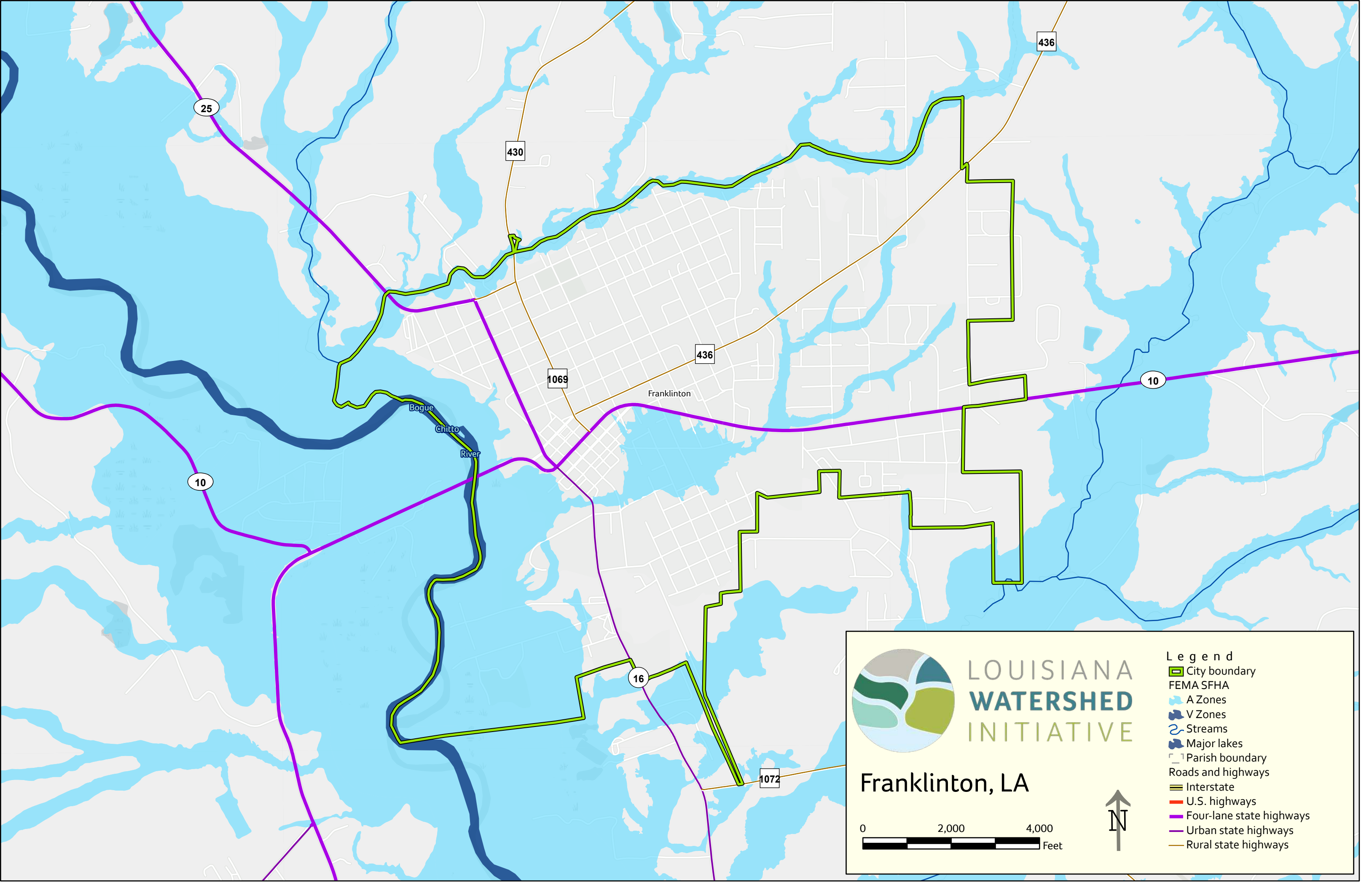
Feet


↑

N

Legend

- City boundary
- FEMA SFHA
- A Zones
- V Zones
- Streams
- Major lakes
- Parish boundary
- Roads and highways
 - Interstate
 - U.S. highways
 - Four-lane state highways
 - Urban state highways
 - Rural state highways





LOUISIANA
WATERSHED
INITIATIVE


Franklinton, LA

0

2,000

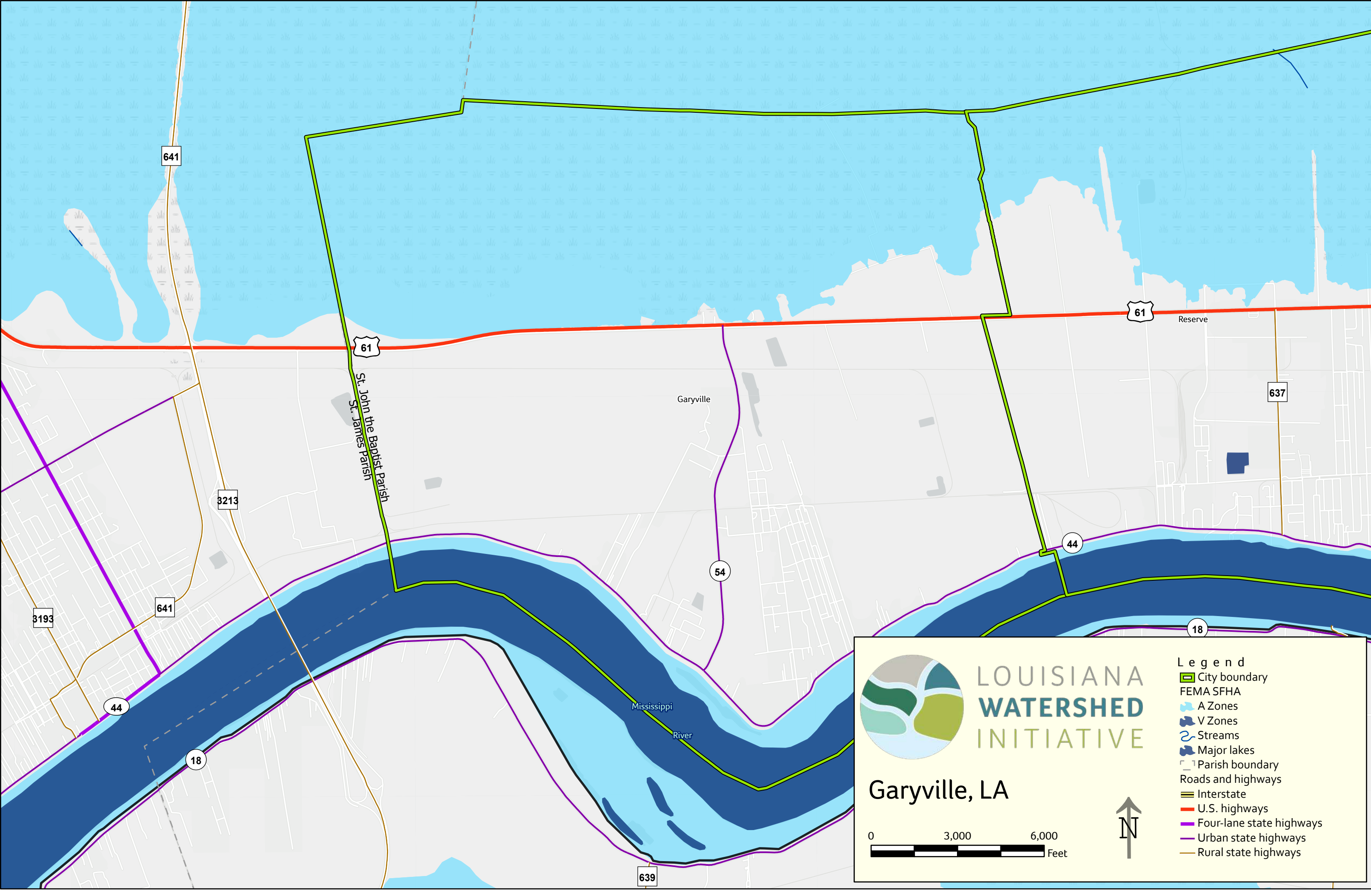
4,000


Feet



Legend

- City boundary
- FEMA SFHA
 - A Zones
 - V Zones
- Streams
- Major lakes
- Parish boundary
- Roads and highways
 - Interstate
 - U.S. highways
 - Four-lane state highways
 - Urban state highways
 - Rural state highways





LOUISIANA
WATERSHED
INITIATIVE

Garyville, LA

0

3,000

6,000

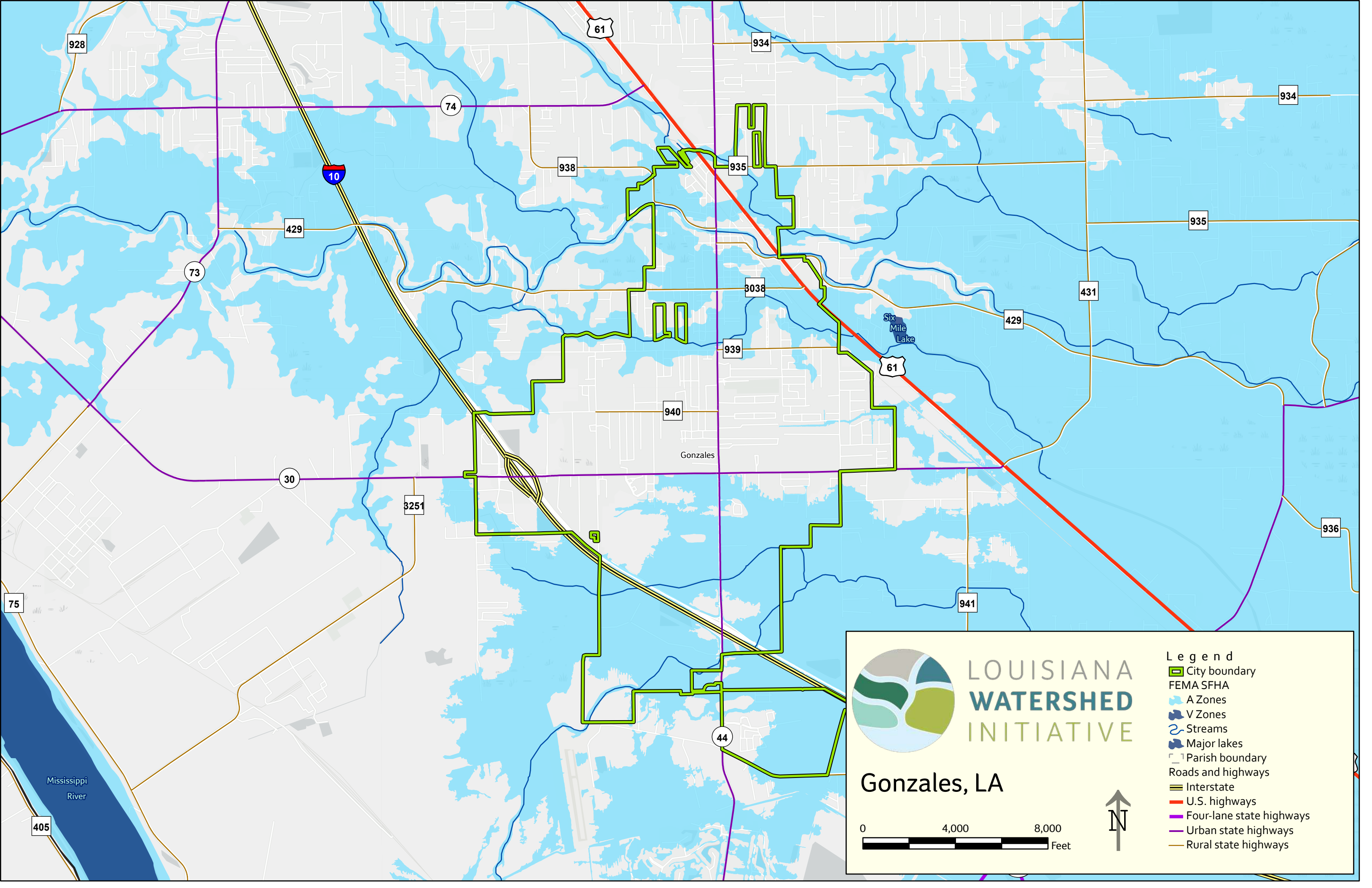
Feet


↑

N

Legend

- City boundary
- FEMA SFHA
 - A Zones
 - V Zones
- Streams
- Major lakes
- Parish boundary
- Roads and highways
 - Interstate
 - U.S. highways
 - Four-lane state highways
 - Urban state highways
 - Rural state highways





LOUISIANA
WATERSHED
INITIATIVE

Gonzales, LA

0

4,000

8,000

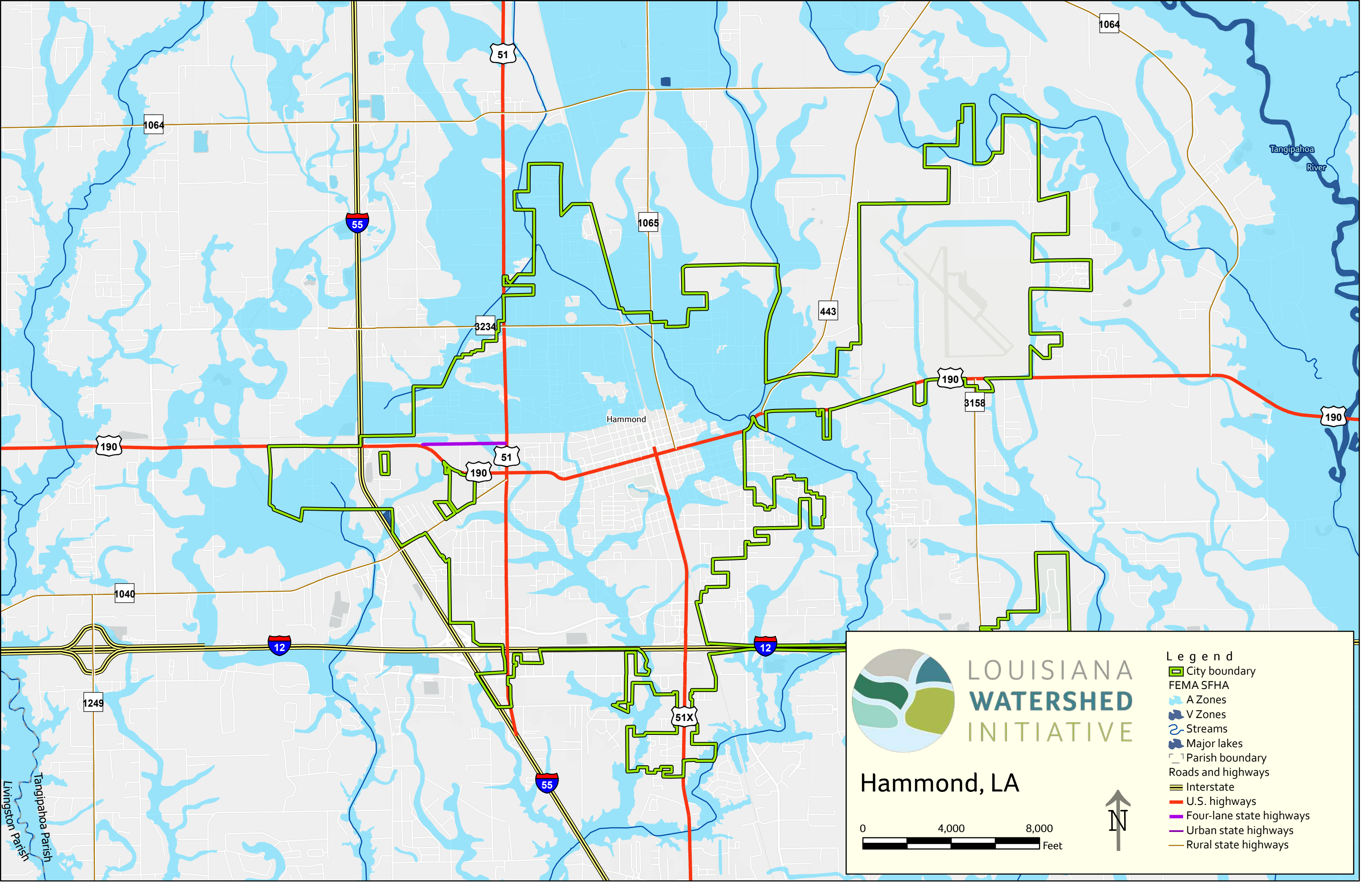
Feet

↑

N

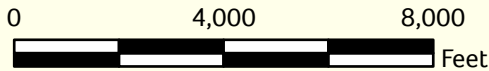
Legend

- City boundary
- FEMA SFHA
 - A Zones
 - V Zones
- Streams
- Major lakes
- Parish boundary
- Roads and highways
 - Interstate
 - U.S. highways
 - Four-lane state highways
 - Urban state highways
 - Rural state highways



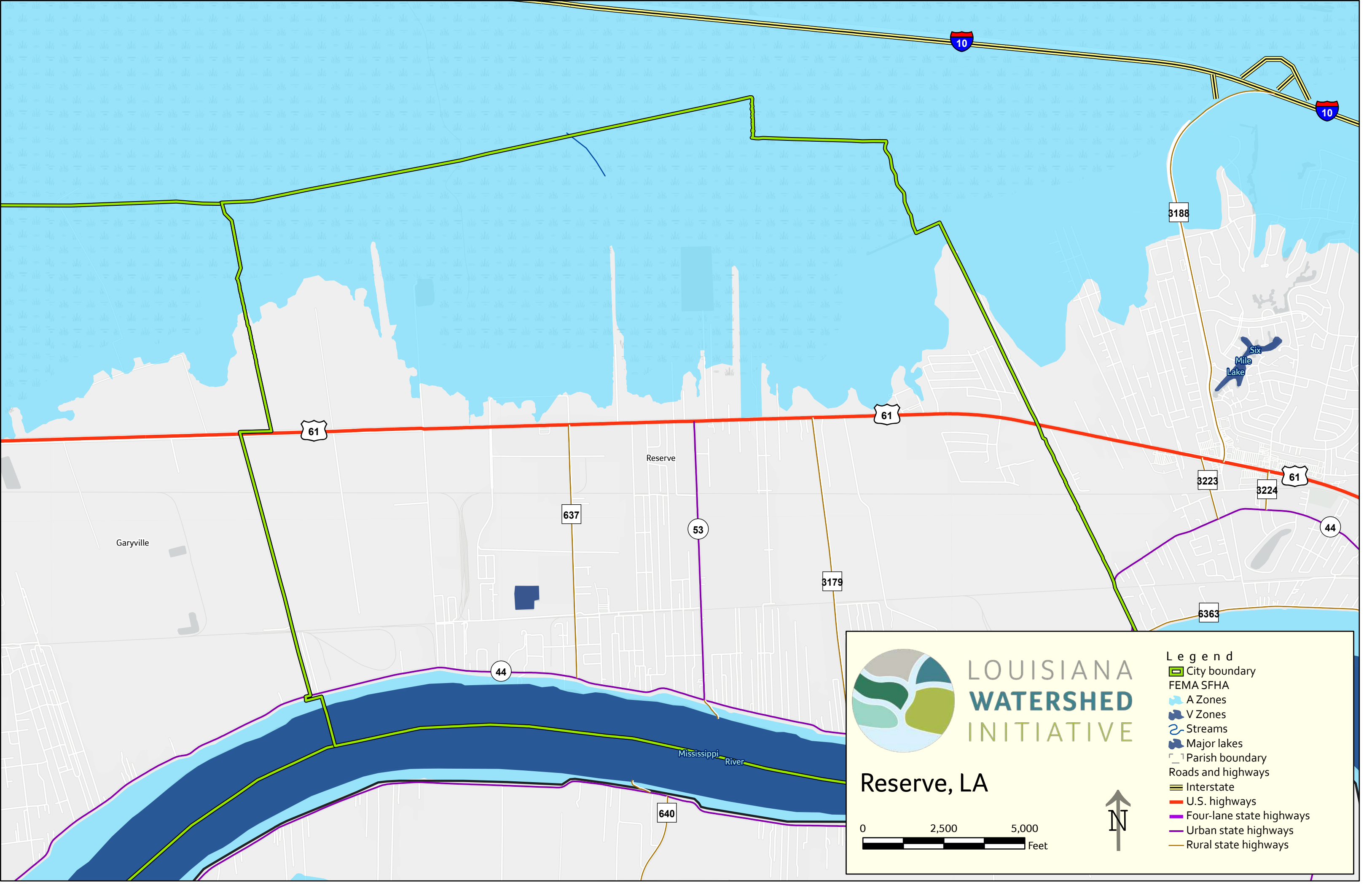
LOUISIANA
WATERSHED
INITIATIVE

Hammond, LA



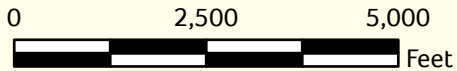
Legend

- City boundary
- FEMA SFHA
 - A Zones
 - V Zones
- Streams
- Major lakes
- Parish boundary
- Roads and highways
 - Interstate
 - U.S. highways
 - Four-lane state highways
 - Urban state highways
 - Rural state highways



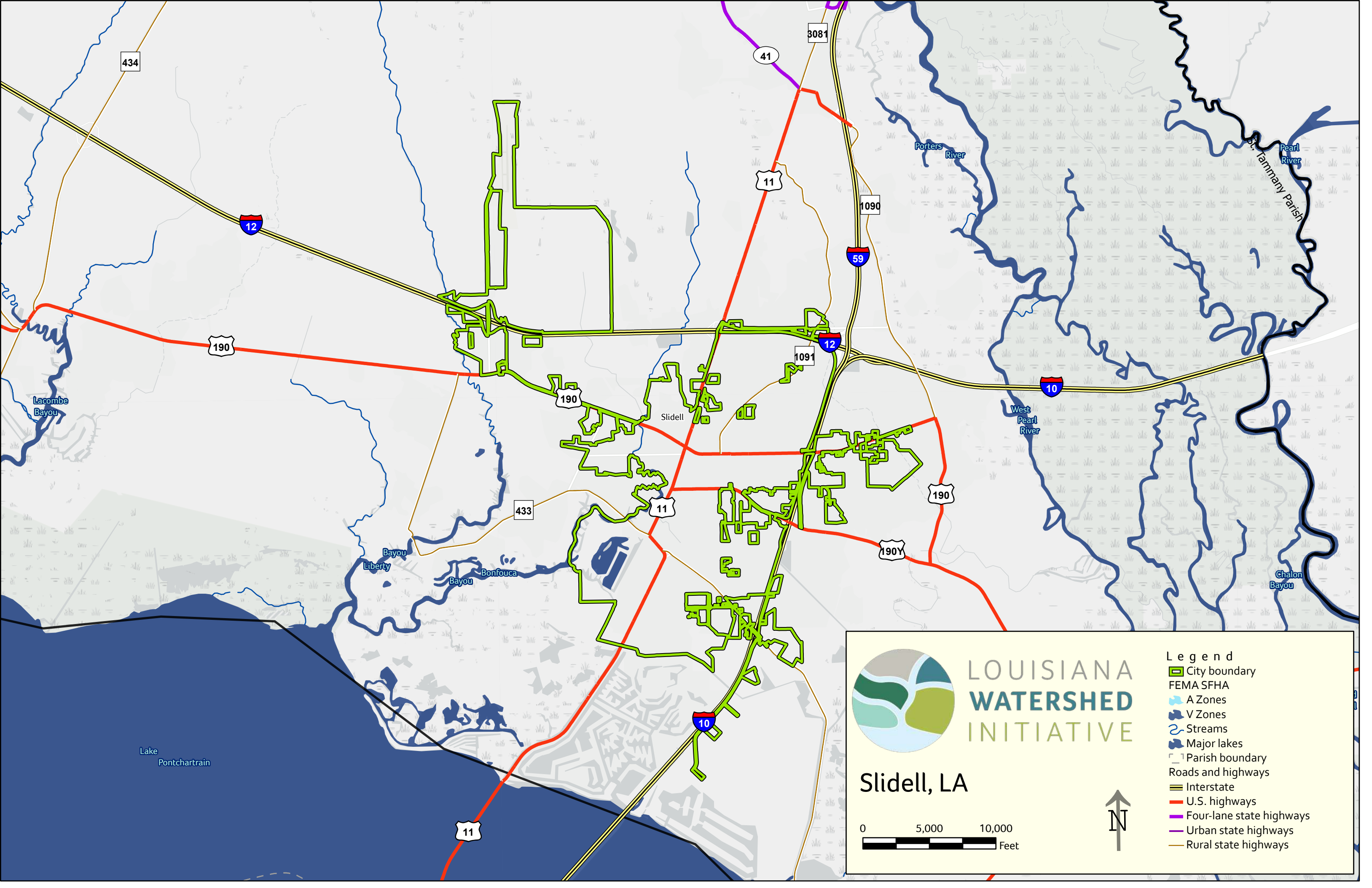
LOUISIANA
WATERSHED
INITIATIVE


Reserve, LA



Legend

- City boundary
- FEMA SFHA
 - A Zones
 - V Zones
- Streams
- Major lakes
- Parish boundary
- Roads and highways
 - Interstate
 - U.S. highways
 - Four-lane state highways
 - Urban state highways
 - Rural state highways





LOUISIANA
WATERSHED
INITIATIVE

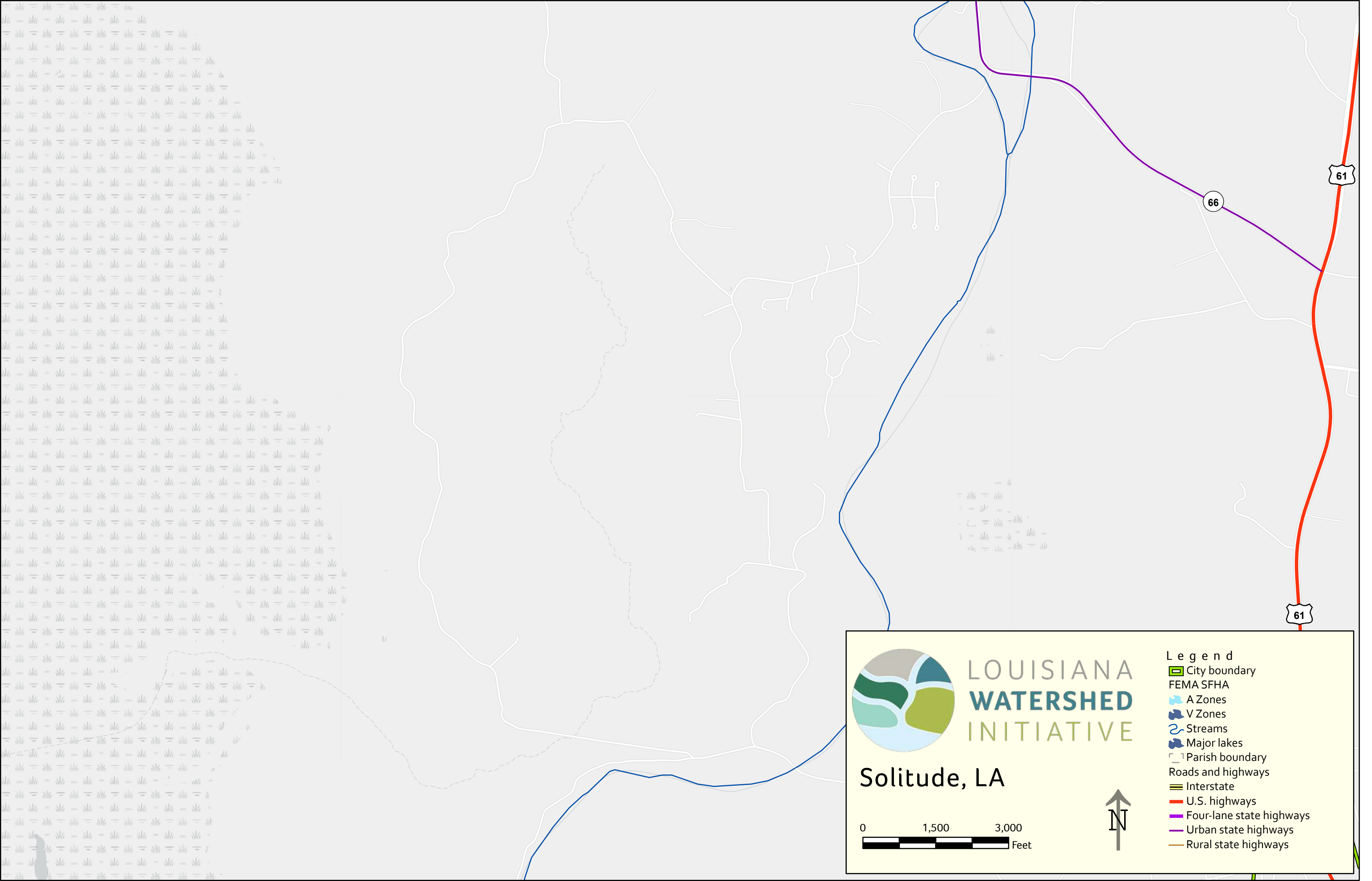
Slidell, LA

0 5,000 10,000
Feet

↑ N

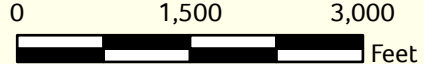
Legend

- City boundary
- FEMA SFHA
 - A Zones
 - V Zones
- Streams
- Major lakes
- Parish boundary
- Roads and highways
 - Interstate
 - U.S. highways
 - Four-lane state highways
 - Urban state highways
 - Rural state highways

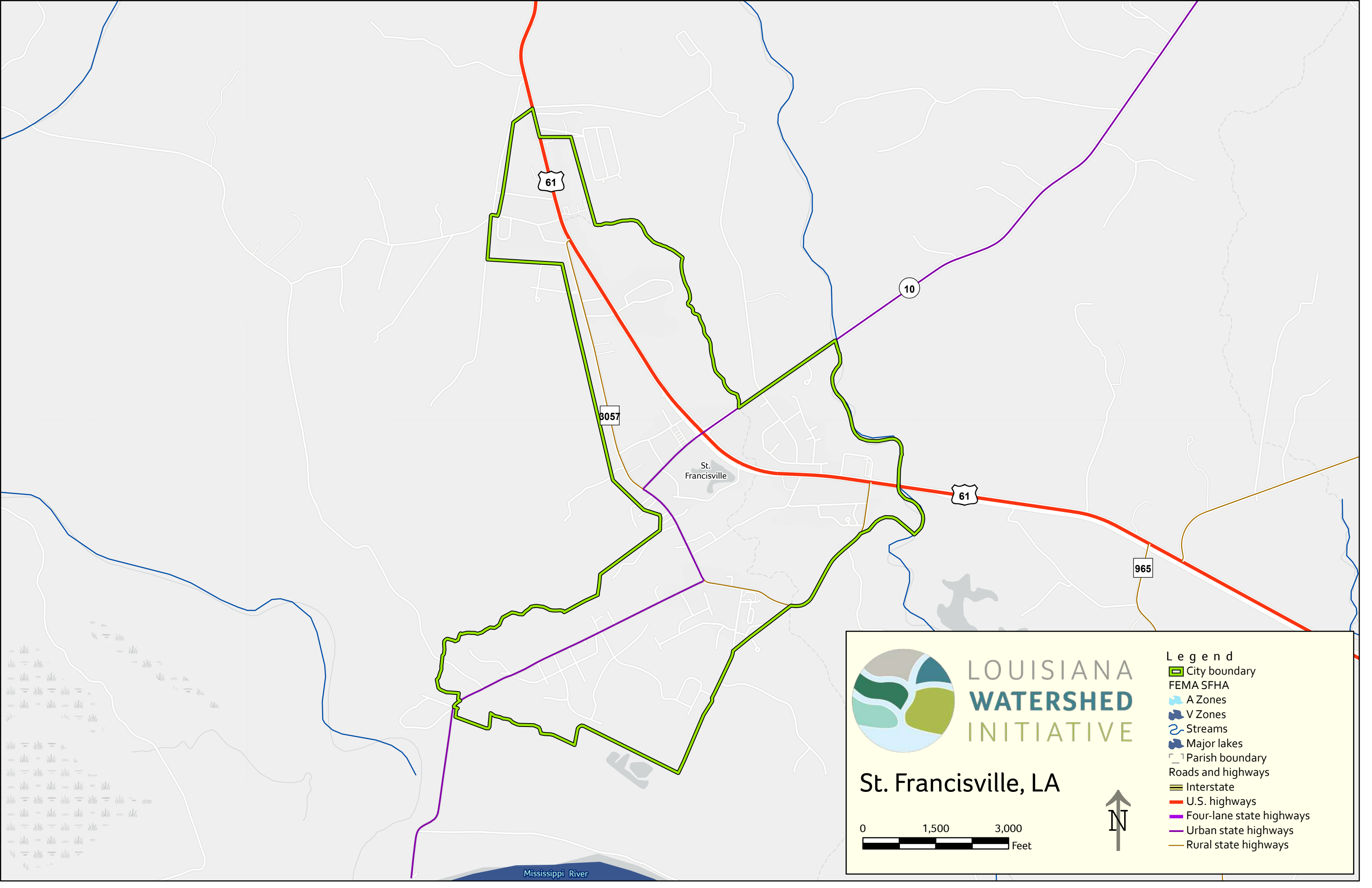



LOUISIANA
WATERSHED
INITIATIVE

Solitude, LA



- Legend
- City boundary
 - FEMA SFHA
 - A Zones
 - V Zones
 - Streams
 - Major lakes
 - Parish boundary
 - Roads and highways
 - Interstate
 - U.S. highways
 - Four-lane state highways
 - Urban state highways
 - Rural state highways






LOUISIANA
WATERSHED
INITIATIVE

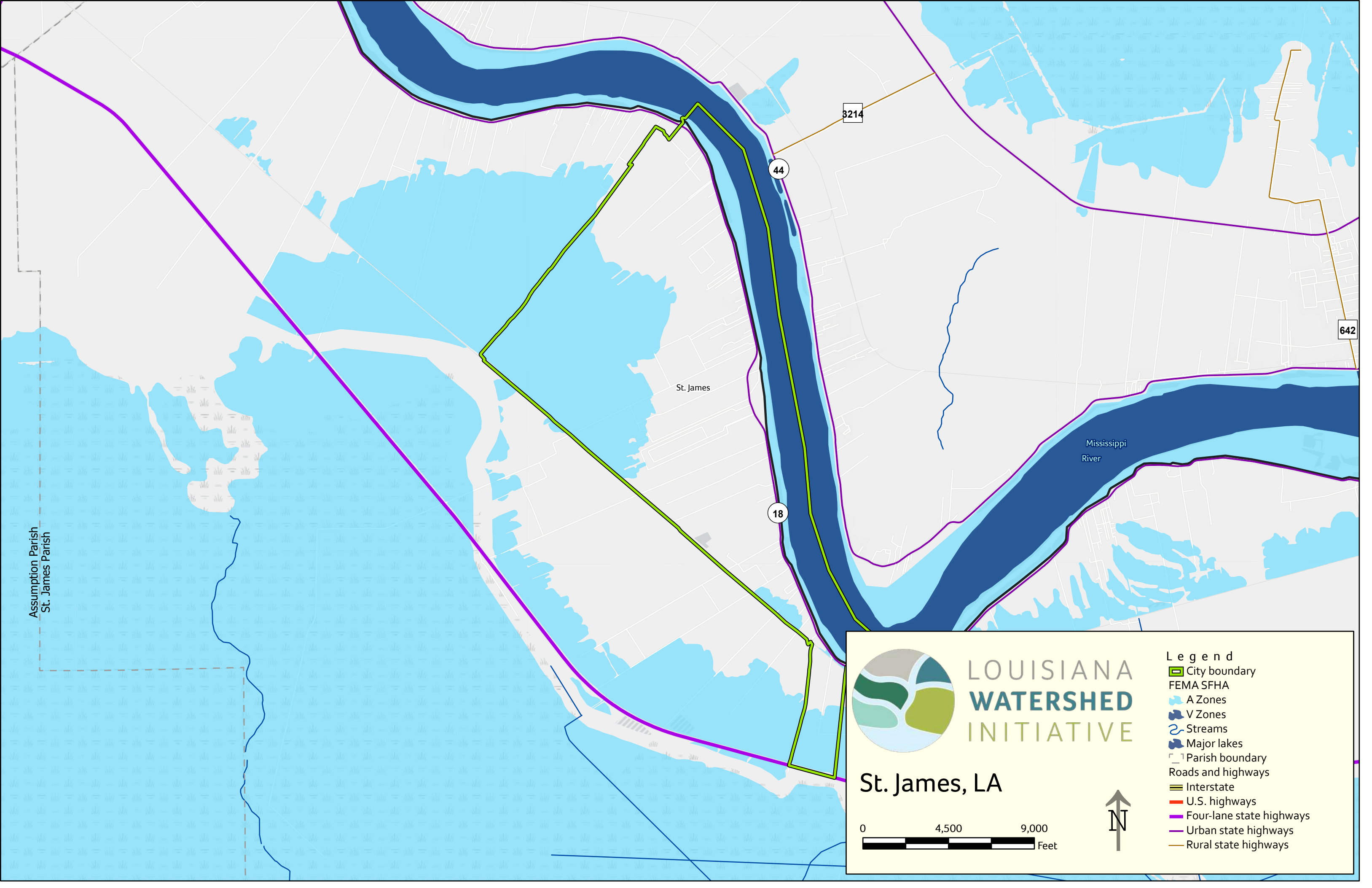
St. Francisville, LA

0 1,500 3,000 Feet



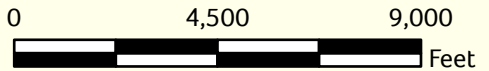
Legend

- City boundary
- FEMA SFHA
 - A Zones
 - V Zones
- Streams
- Major lakes
- Parish boundary
- Roads and highways
 - Interstate
 - U.S. highways
 - Four-lane state highways
 - Urban state highways
 - Rural state highways



LOUISIANA
WATERSHED
INITIATIVE

St. James, LA



Legend

- City boundary
- FEMA SFHA
 - A Zones
 - V Zones
- Streams
- Major lakes
- Parish boundary
- Roads and highways
 - Interstate
 - U.S. highways
 - Four-lane state highways
 - Urban state highways
 - Rural state highways