

Grant Parish
Natchitoches Parish

Natchitoches Parish
Rapides Parish

Red
River


Grant Parish
Rapides Parish

Colfax

158

8

8



LOUISIANA
WATERSHED
INITIATIVE

Colfax, LA

05001,000

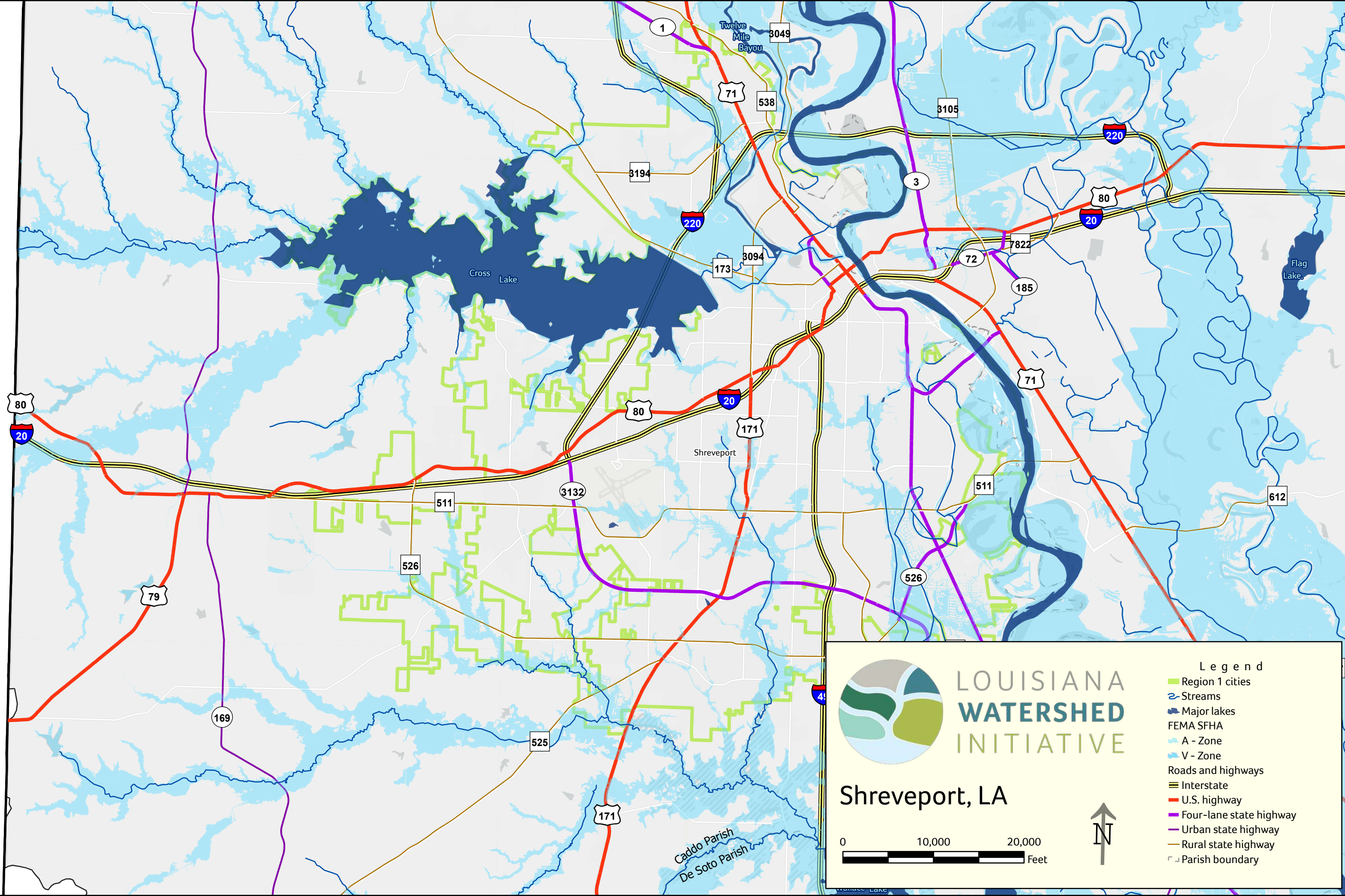
Feet


↑

N

Legend

- Region 1 cities
- Streams
- Major lakes
- FEMA SFHA
 - A - Zone
 - V - Zone
- Roads and highways
 - Interstate
 - U.S. highway
 - Four-lane state highway
 - Urban state highway
 - Rural state highway
- Parish boundary





LOUISIANA
WATERSHED
INITIATIVE

Shreveport, LA

0

10,000

20,000

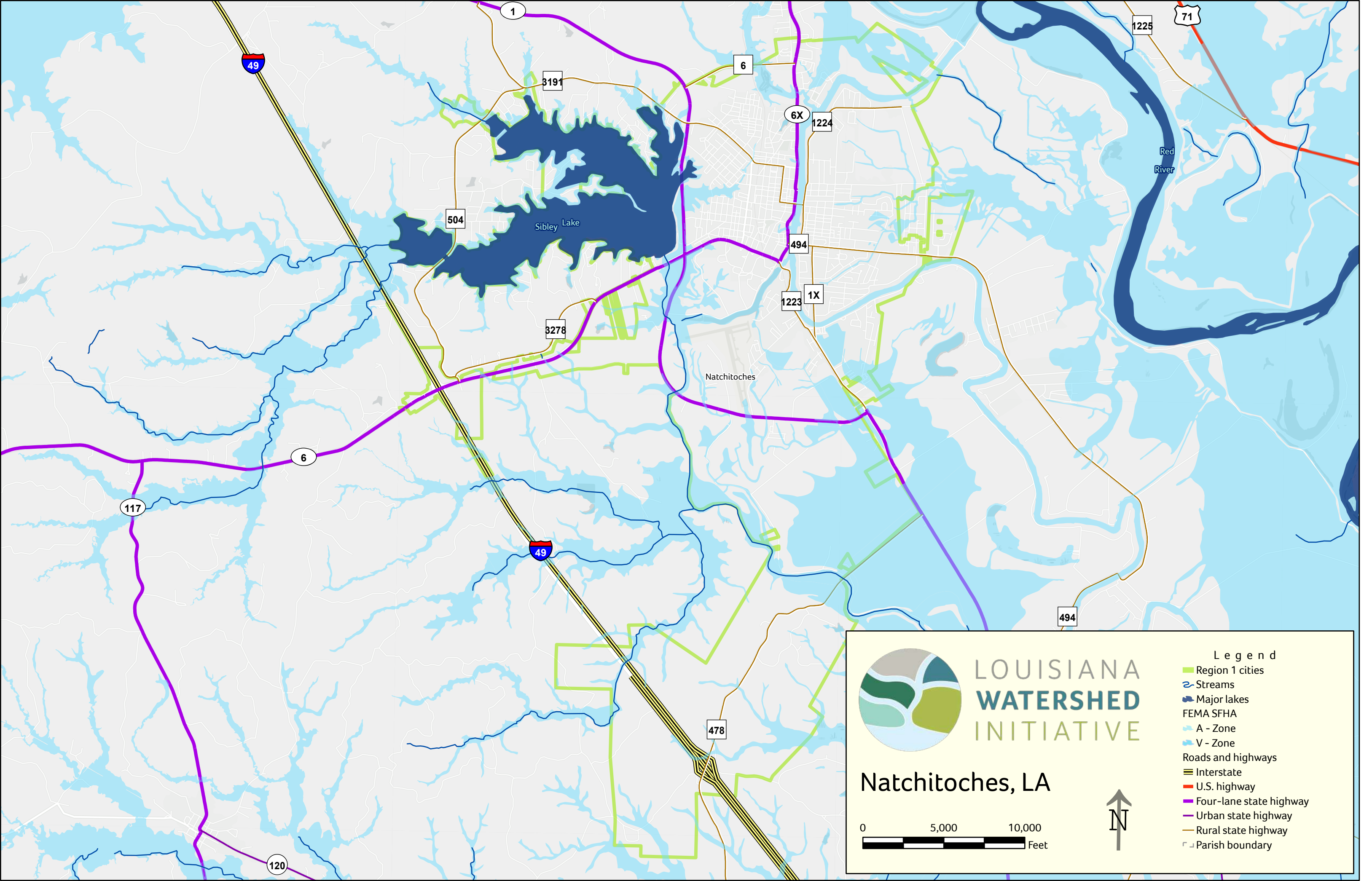
Feet


↑

N

Legend

- Region 1 cities
- Streams
- Major lakes
- FEMA SFHA
 - A - Zone
 - V - Zone
- Roads and highways
 - Interstate
 - U.S. highway
 - Four-lane state highway
 - Urban state highway
 - Rural state highway
- Parish boundary





LOUISIANA
WATERSHED
INITIATIVE

Natchitoches, LA

0

5,000

10,000

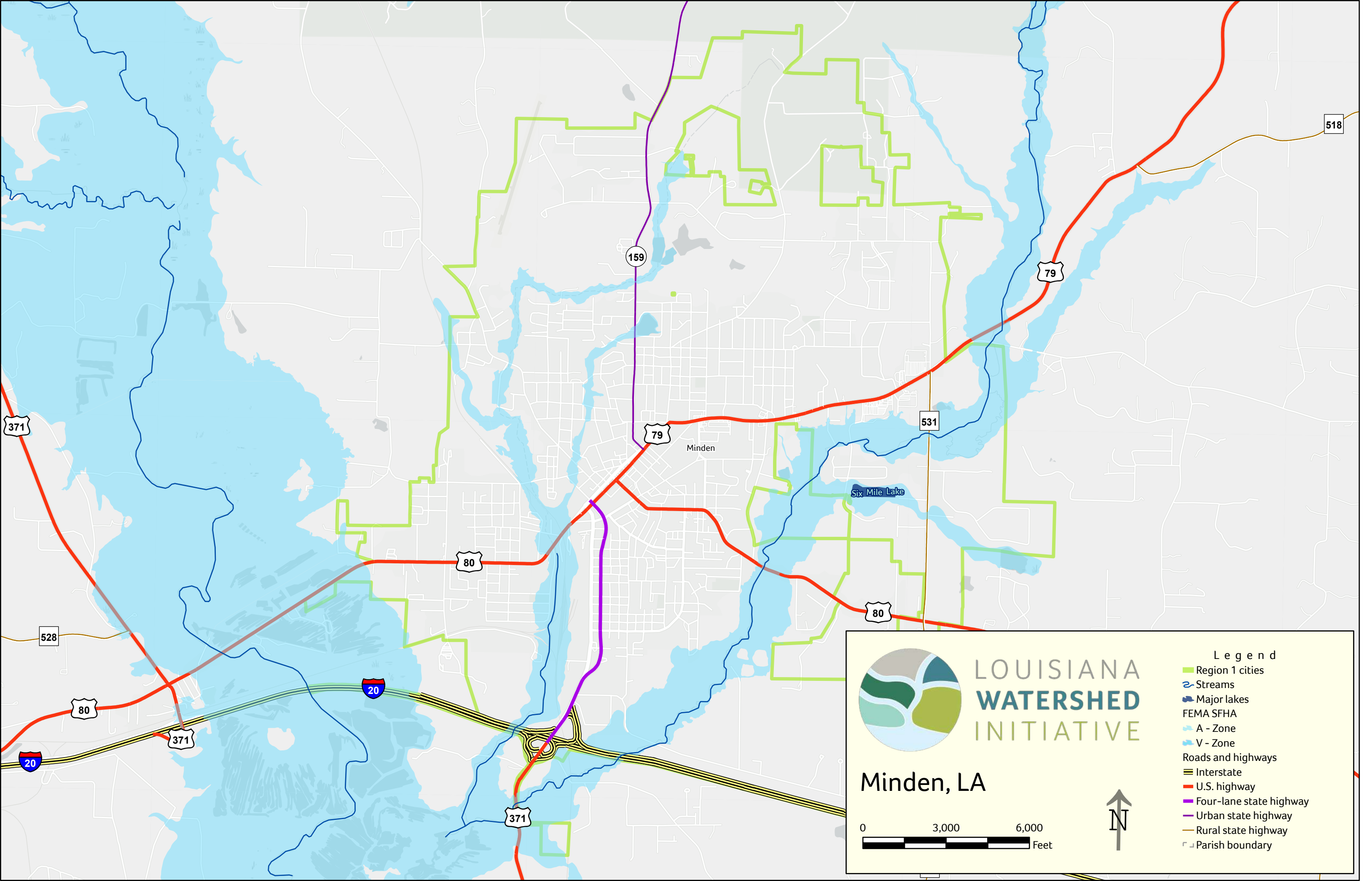
Feet


↑

N

Legend

- Region 1 cities
- Streams
- Major lakes
- FEMA SFHA
 - A - Zone
 - V - Zone
- Roads and highways
 - Interstate
 - U.S. highway
 - Four-lane state highway
 - Urban state highway
 - Rural state highway
- Parish boundary






LOUISIANA
WATERSHED
INITIATIVE

Minden, LA

0 3,000 6,000 Feet



Legend

- Region 1 cities
- Streams
- Major lakes
- FEMA SFHA
 - A - Zone
 - V - Zone
- Roads and highways
 - Interstate
 - U.S. highway
 - Four-lane state highway
 - Urban state highway
 - Rural state highway
- Parish boundary